

2009

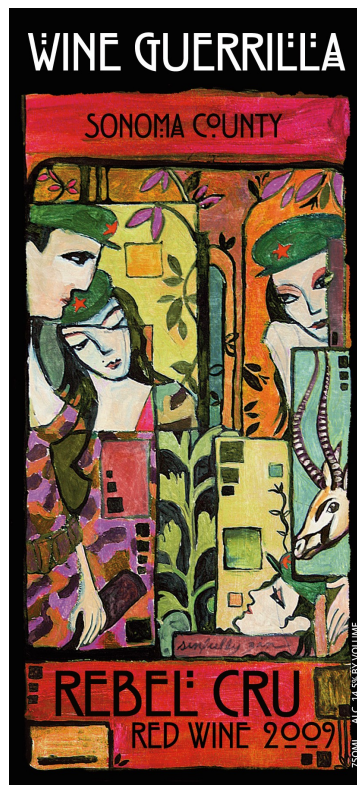
Rebel Cru

**Sonoma County
Zinfandel blend**

**40% Zinfandel
40% Cabernet
Sauvignon, 10%
Syrah & 10% Petite
Sirah**

You wouldn't expect a sissy blend from a revolutionary. Our new Cru gets big and bold with zinfandel, cabernet sauvignon, syrah and petite sirah. It's like the Fab Four of wine-zin the 'cute one,' cab the 'clever one,' syrah the 'quiet one' and petite sirah the 'funny one.' Together, they make beautiful music.

2009 Sonoma County Rebel Cru



2009

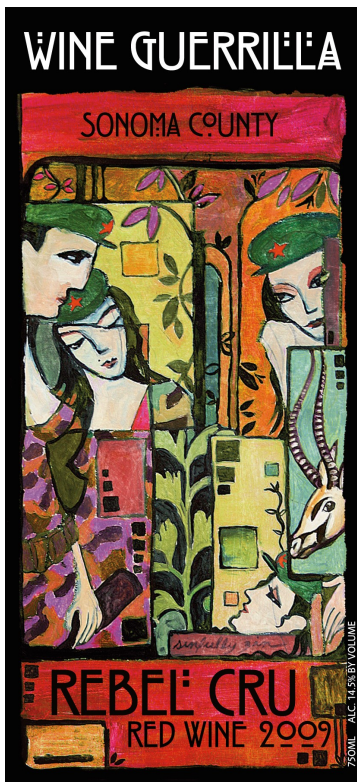
Rebel Cru

**Sonoma County
Zinfandel blend**

**40% Zinfandel
40% Cabernet
Sauvignon, 10%
Syrah & 10% Petite
Sirah**

You wouldn't expect a sissy blend from a revolutionary. Our new Cru gets big and bold with zinfandel, cabernet sauvignon, syrah and petite sirah. It's like the Fab Four of wine-zin the 'cute one,' cab the 'clever one,' syrah the 'quiet one' and petite sirah the 'funny one.' Together, they make beautiful music.

2009 Sonoma County Rebel Cru



2009

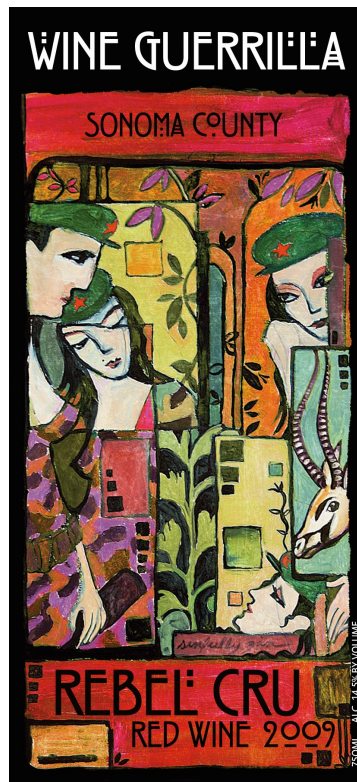
Rebel Cru

**Sonoma County
Zinfandel blend**

**40% Zinfandel
40% Cabernet
Sauvignon, 10%
Syrah & 10% Petite
Sirah**

You wouldn't expect a sissy blend from a revolutionary. Our new Cru gets big and bold with zinfandel, cabernet sauvignon, syrah and petite sirah. It's like the Fab Four of wine-zin the 'cute one,' cab the 'clever one,' syrah the 'quiet one' and petite sirah the 'funny one.' Together, they make beautiful music.

2009 Sonoma County Rebel Cru



2009

Rebel Cru

**Sonoma County
Zinfandel blend**

**40% Zinfandel
40% Cabernet
Sauvignon, 10%
Syrah & 10% Petite
Sirah**

You wouldn't expect a sissy blend from a revolutionary. Our new Cru gets big and bold with zinfandel, cabernet sauvignon, syrah and petite sirah. It's like the Fab Four of wine-zin the 'cute one,' cab the 'clever one,' syrah the 'quiet one' and petite sirah the 'funny one.' Together, they make beautiful music.

2009 Sonoma County Rebel Cru